

## AGI Business Partner Logo - STK Instructions

Link to AGI Business Partner logos:

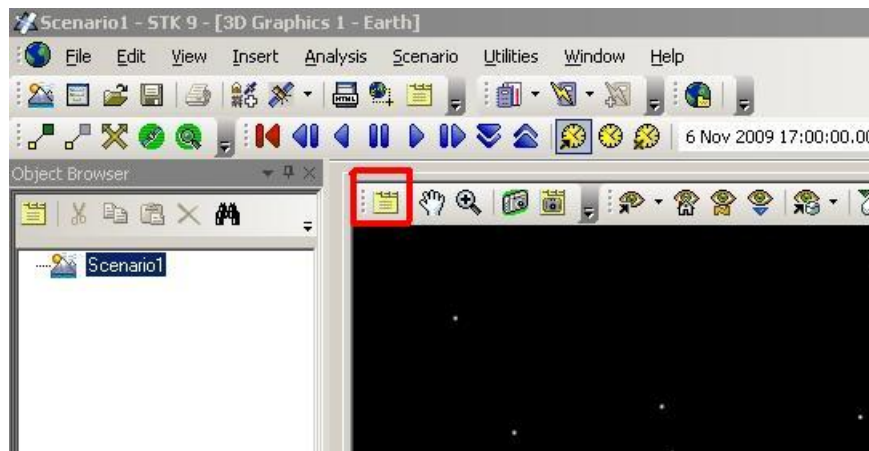
<http://www.agi.com/media-center/multimedia/logos/>

This will guide you through the process of adding the AGI Business Partner logo to your STK scenario in STK 9. Before proceeding, please visit the AGI logo page (link above) and save the logo you prefer to a folder and remember the file location as you will navigate back to it in Step 3.

***“AGI\_BusinessPartners3.jpg” and “AGI\_BusinessPartner6.jpg” logos show the best in STK scenarios.***

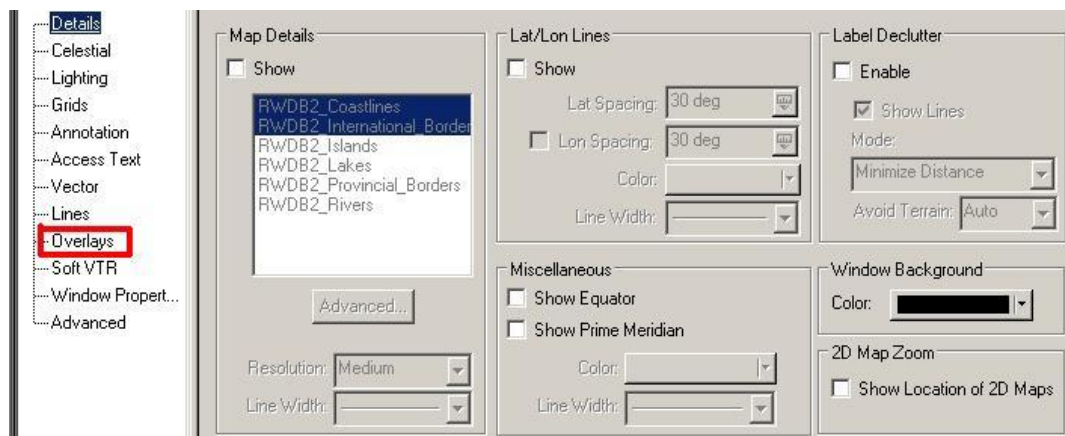
### Step 1:

***Click the yellow notepad icon in the 3D Graphics Window to open the 3D Graphics Properties***



### Step 2:

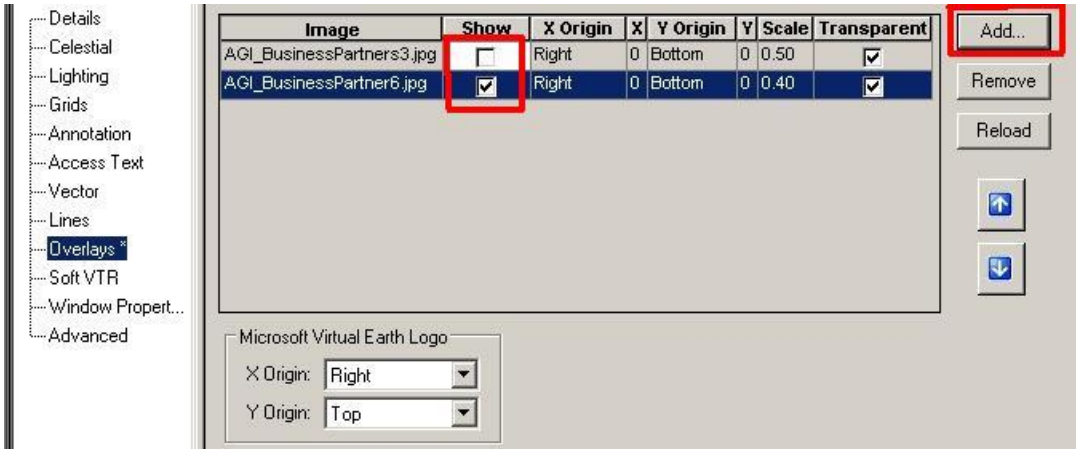
***Click on the Overlays section in the 3D Graphics Properties***



**Step 3:**

**3A: Click on Add and navigate to the folder location where the AGI Business Partner logo was previously saved**

**3B: In the “Show” column, select only the Business Partner logo added in Step 3A (“AGI\_BusinessPartners3.jpg” or “AGI\_BusinessPartner6.jpg”)**



**Step 4:**

**In the Scale column, click the existing value and change to the recommended minimums below:**

- “AGI\_BusinessPartners3.jpg” – use 0.50 for scale value
- “AGI\_BusinessPartner6.jpg” – use 0.40 for scale value

**Recommended Scale Settings:**

Image	Show	X Origin	X	Y Origin	Y	Scale	Transparent
AGI_BusinessPartners3.jpg	<input type="checkbox"/>	Right	0	Bottom	0	0.50	<input checked="" type="checkbox"/>
AGI_BusinessPartner6.jpg	<input checked="" type="checkbox"/>	Right	0	Bottom	0	0.40	<input checked="" type="checkbox"/>

**Step 5:**

**Click “Apply” to register the changes, which can now be seen in the 3D Graphics Window**