

Leverage Globeserver in AGI/Viewer

Requirements

- *AGI Viewer8*
- *STK/Professional or STK/Expert*
- *Broadband Internet*

AGI Globeserver compliments the Viewer file by streaming imagery and terrain to it without increasing its file size. Users have two options, publish VDF files containing pre-defined Globeserver globe, or customize this globe with Globeserver content from within AGI Viewer.

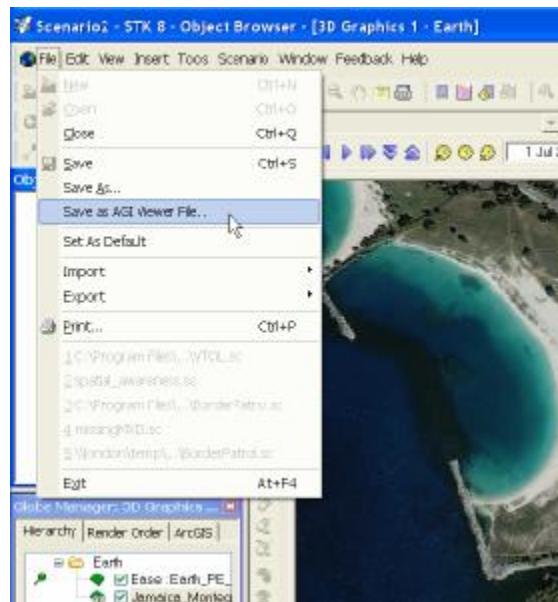
Option 1 Publish a Globeserver Viewer file

As the publisher you'll first need to have an STK Scenario which uses Globeserver imagery

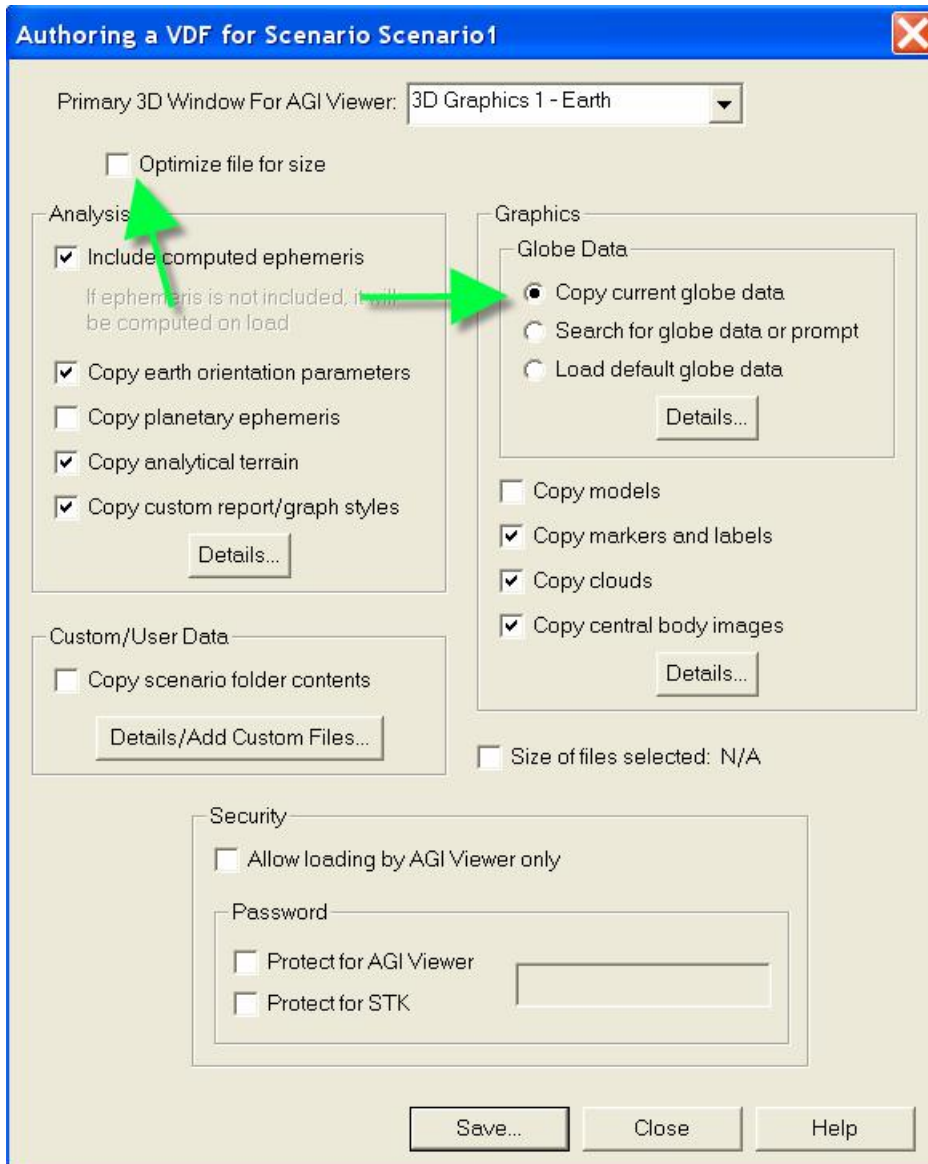
If you don't already have one please refer to the [previous exercise](#).

STEP 1 Open a scenario containing a globe which refers to Globeserver content.

STEP 2 Go to the File Menu and select "**Save as AGI Viewer File...**"



STEP 3 Uncheck “Optimize Viewer file for size”, under Graphics, check “**Copy current globe data**”.



STEP 4 Click “Save...”, supply a name, and then note the output location.


STEP 5 Close STK and open the AGI/Viewer (.VDF) file you created. To do this double-click on the file or open Viewer and select Open under the File Menu

Share the your new VDF file with anyone using [AGI/Viewer](#).

Option 2 Custom globe inside Viewer


STEP 1 Open a Viewer file. Use the .vdf file you just created or download [this one](#).

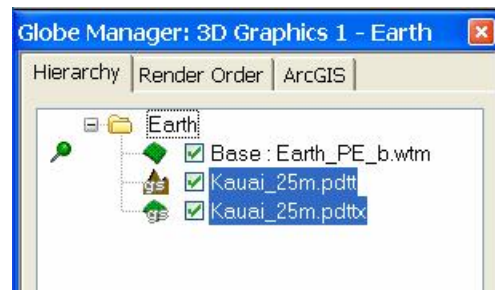
STEP 2 Click  in the Globe Manager Toolbar

STEP 3 Click Add Terrain/Imagery , then change the Location Type drop-down to Globeserver. A list of image files on the AGI hosted example Globeserver will appear.

STEP 4 Select the desired image and click OK

The images you select are now listed in the Globe Manager Hierarchy.

Highlight the image you imported and click “Zoom To” .



STEP 5 Right-click on Earth in the Hierarchy tab. Select Special – Change Base, then change the Location Type drop-down to Globeserver. Try some other Base globe images available on Globeserver.