

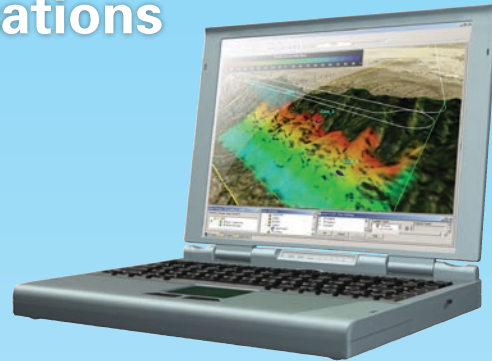


Analytical Graphics, Inc. (AGI) software products deliver real-time decision support, as well as operations research and post-mission analysis. With over 40,000 global software installs and over a 1,000 deployed C4ISR systems, AGI's desktop applications and software development kits are immediately available to respond rapidly to warfighter requirements.

Desktop Applications

1 Concept

- Out-of-the-box GUI
- Early response to warfighter requirements
- Communication and proposal of solutions
- Operations research and analysis



2 Experiment & Demonstrate

- Customizable GUIs
- Mission-specific workflows
- Proof of concept in operational exercise

3 Acquire, Develop & Deploy

- Component software libraries
- Service Oriented Architectures
- Data sharing
- Integrated solutions



Software Development Kits

Right Answers. Right Now.

Reduced Risk

With 20 years of continuous improvements in computational accuracy, extensibility and overall performance, AGI software development kits address problems and changing requirements that are difficult to anticipate. AGI's operationally proven, open software platform allows you to focus your unique intellectual property on program-specific requirements. Because analytical fidelity is of the utmost importance for AGI products, our technology continues to undergo verification and validation to ensure accuracy, quality, performance, and reliability. For more information on this please view agi.com/vv.

Reliable support from engineers and developers

AGI customers are assured the highest-level of support from bona fide aerospace engineers and developers who are prepared to assist with installation, technical problem analysis, software integration and best practices. In addition, our full-time, headquarters-based team conducts training programs, seminars, workshops and online user groups – for any level of expertise.

Ready now

AGI's desktop applications and software development kits are immediately available to build mission specific applications, extend existing applications and conduct operations research. Gain access to free AGI software today by visiting C4ISR.agi.com.

C4ISR.agi.com

©2010 ANALYTICAL GRAPHICS, INC.

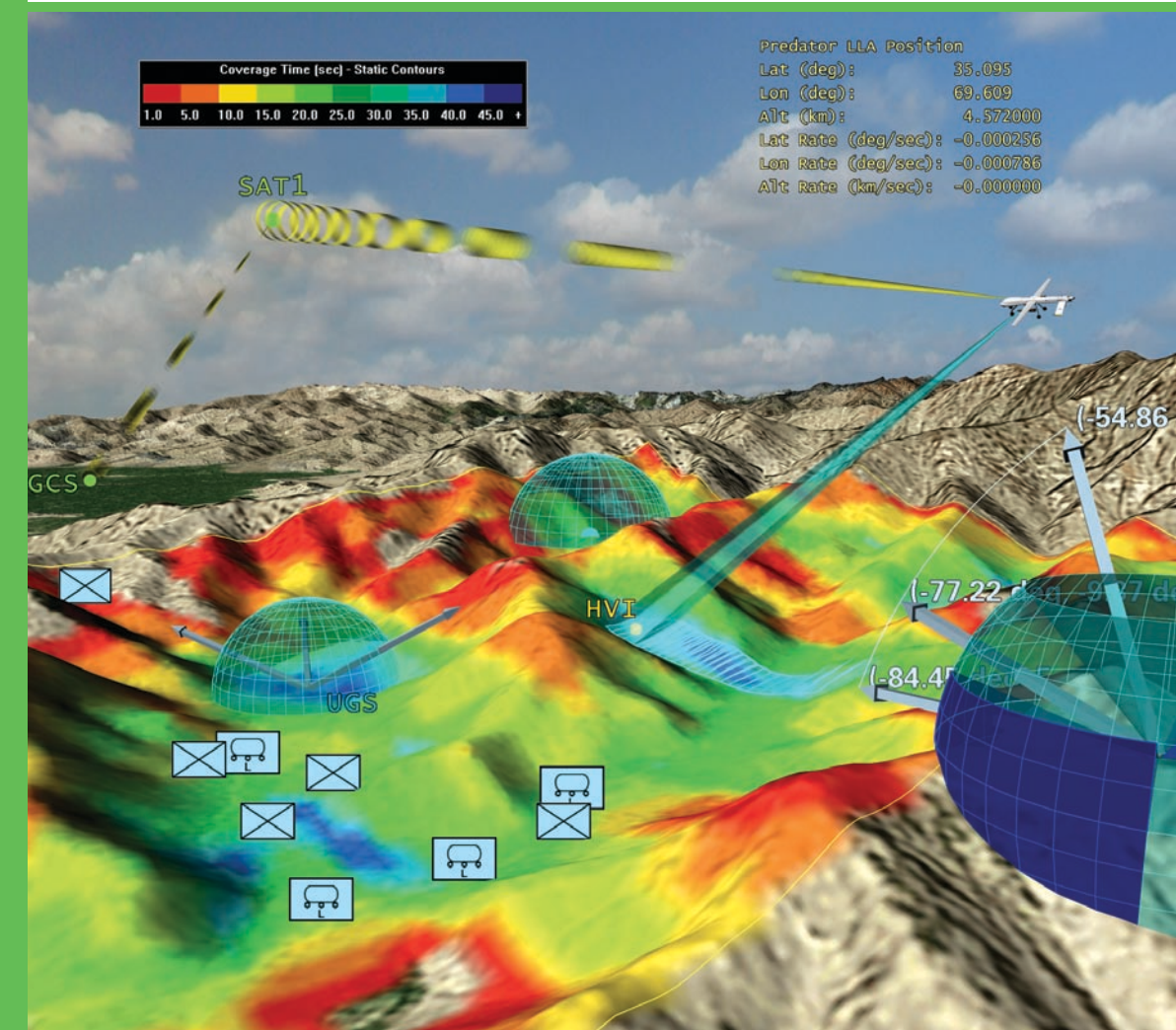


GENERAL INFO & SALES
Phone: 1.800.220.4785*
1.610.981.8000
E-mail: info@agi.com

TECHNICAL SUPPORT
Phone: 1.888.785.9973*
1.610.981.8888
E-mail: support@agi.com
*Toll-free in U.S. & Canada



C4ISR | Software to conceptualize, demonstrate & deploy at an operational tempo



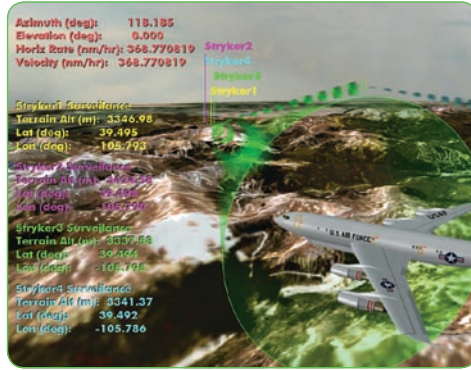
High-fidelity COTS capability

AGI software capabilities critical to C4ISR:

- Spatial mechanics engine**

AGI software manages the position and orientation of vehicles such as aircraft, spacecraft, ships and ground vehicles within time and space. This spatial mechanics engine allows you to evaluate the relationship between any spatially-correlated object and incorporate:

- environmental constraints such as terrain, the Sun, atmosphere and gravity
- physical constraints such as body masking, camera, antenna and radar capabilities



- Vehicle motion**

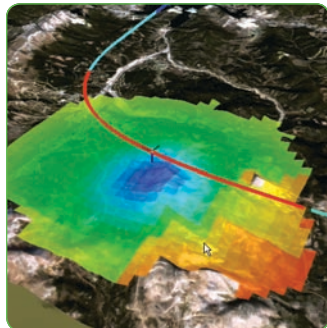
AGI software can move vehicles forward and backward in time using a range of pre-built models for vehicle motion. You can easily predict satellite motion using full-force propagators, aircraft motion using performance data and other vehicle motion using a simple speed and heading.

- Analysis tools**

AGI software can calculate the relationships between objects in time and space and characterize the performance of those objects. These time-based relationships include available line of sight, multi-hop links, RF communications links and sensor coverage.

- Dynamic 3D visualization**

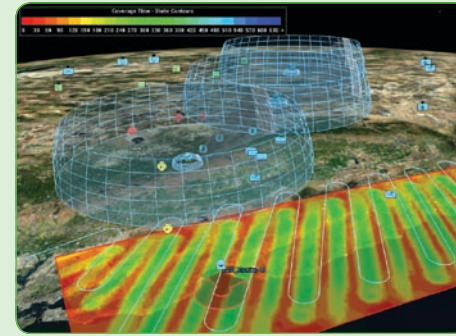
AGI software enables the accurate, efficient and deliverable display of C4ISR data. This display is abstracted from OpenGL®, designed for flexibility and performance and can be implemented inside desktop applications or Web browsers. Its data interfaces also enable easy integration of GIS data, as well as displaying moving objects.



Example C4ISR applications

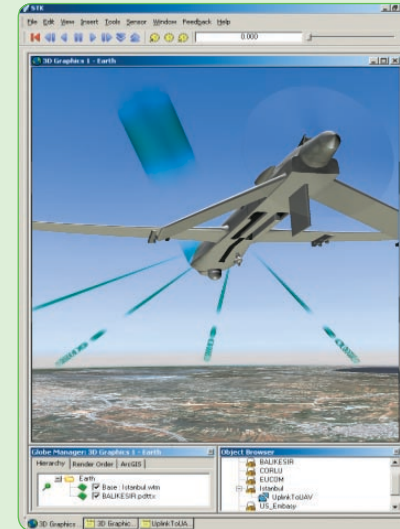
- Essential components for persistent surveillance**

AGI's software development kits enable easy fusing of real-time Multi-INT data to detect, locate, track and engage time-sensitive targets. In addition to operational usage, AGI software's system modeling and data playback predicts system performance for persistent surveillance missions. AGI's software identifies trends and detect anomalies from historical data.



- Support for situational awareness**

AGI's software development kits enable software developers to build a world class common operating picture (COP) based on commercial-off-the-shelf (COTS) software that supports: full motion video (FMV); blue, red and neutral force tracking; geometric sensor modeling; communications links; GIS data; and ISR assets.



- Communications system modeling**

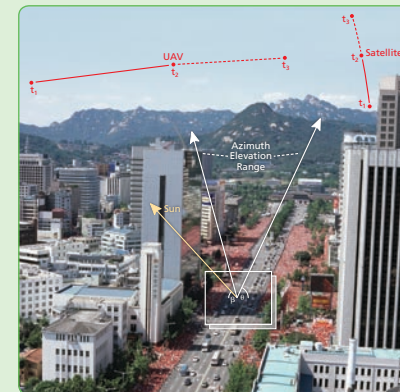
AGI software's communications capability supports wireless link analysis for antennas enabling software developers to model and analyze:

- Antenna gain patterns
- Wireless signal propagation
- Hardware-in-the-loop simulations
- Link budgets

- Support for video and imagery exploitation**

AGI software facilitates targeted searches of cataloged video and imagery by increasing the searchable attributes to include geometric, lighting and temporal conditions. AGI software can be used to return the precise times where video and imagery match specified requirements. Specific parameters that can be modeled include:

- Sun elevation angle and azimuth
- Sensor geometry
- Target elevation angle and azimuth
- Time
- Terrain (natural or urban)



C4ISR form factors

- Application of desktop software**

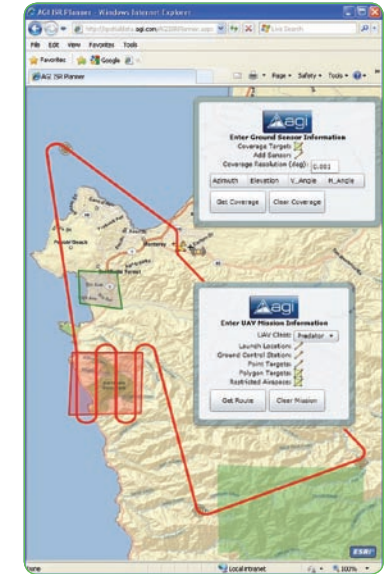
- Engineering systems analysis
- Trade studies
- Flight test planning or after-test review
- Validation of control
- Simulation

- Software development library**

- Service oriented architecture (SOA) ready
- Platform-independent .NET and Java libraries
- Internationalized
- 64-bit compatible
- Thread safe and multi-threaded
- Supports parallel processing, multi-tasking and scalability

- Example implementations**

- SOA** – Effectively implement AGI software libraries as Web services to meet mission requirements. AGI software is created using modern development technologies to efficiently support server-based processing.
- Thick or thin-client architecture** – Facilitate easy integration into a wide range of systems such as Google Earth™, Microsoft™ or ESRI™ via AGI software's interoperability with industry and open standards.
- Mobile** – Implement AGI software into lightweight clients, enabling warfighters to leverage the analytic power of AGI software through a range of interfaces from simple maps to augmented reality.



1,000 deployed C4ISR systems leverage AGI software

- DCGS-AF – U.S. Air Force
- DCGS-A – U.S. Army
- JIOC – JFCOM
- GDM – U.S. Army INSCOM
- DSAT – U.S. Army FA-40
- Constant Sentinel – U.S. Air Force
- JDISS – CMMA (with BVI and Flight Control)
- AMMP – DIA

