



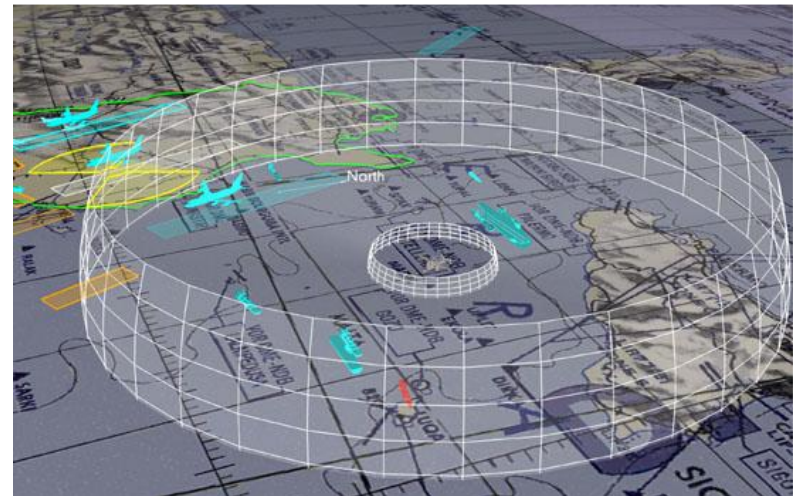
Analysis software for land, sea, air, & space

Adding temporal Geospatial Content for Joint Intelligence Operations

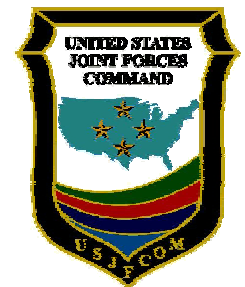
Agenda



- INSCOM background
- Geodynamic situational awareness
- AGI technology example
- Next generation interoperability
- Closing remarks



- INSCOM Mission:
 - Conduct intelligence ops for commanders & decision makers
 - Provide battlefield understanding for the warfighter
 - Collect intel in all intelligence disciplines
- Futures Division:
 - Defining future of intel analysis
 - Integrating advanced analytical methods & tools
 - INSCOM Information Dominance Center (IDC)
- INSCOM IDC analysis architecture adopted by JIOC & DCGS



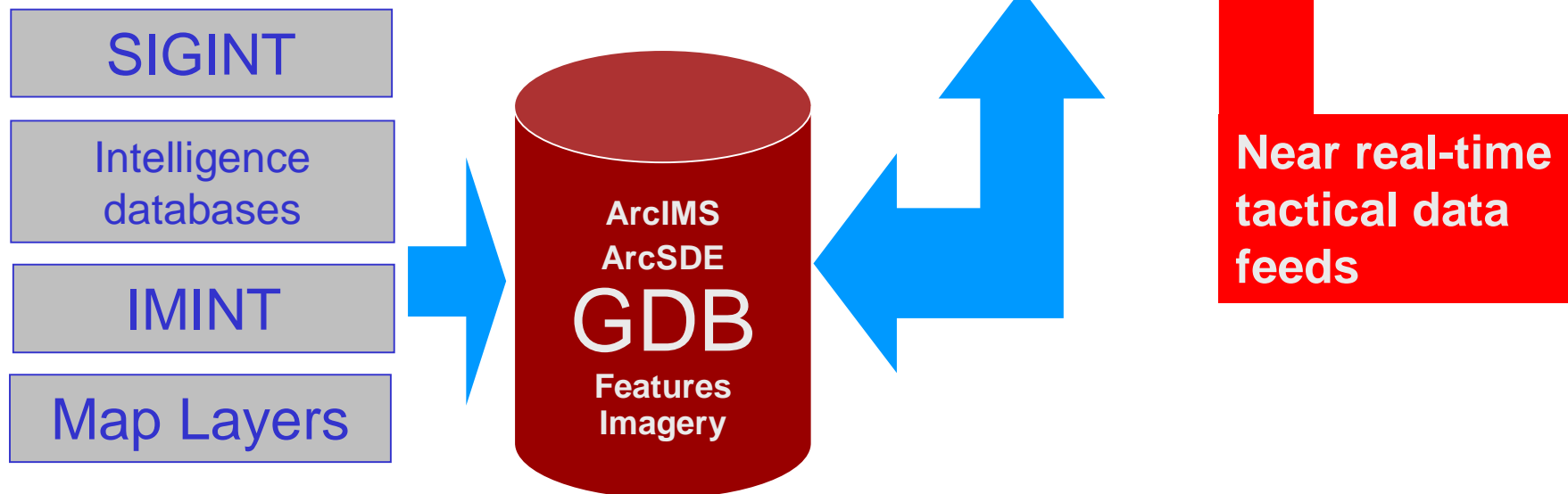


- **Need:**
 - Monitor moving assets relative to geospatial data
 - Near-real-time, multi-int
 - Interrogate & query geospatial data
- **ESRI Architecture:**
 - Manage geospatial content
 - Storage and publishing
- **AGI Software:**
 - STK engine, adapted as a situational-awareness viewer (GDM)
 - Integrated with ESRI ArcGIS capabilities

AGI architecture at INSCOM



- GDM
- Flight Control
- ArcObjects
- Geodatabases



Temporal Geometry basics



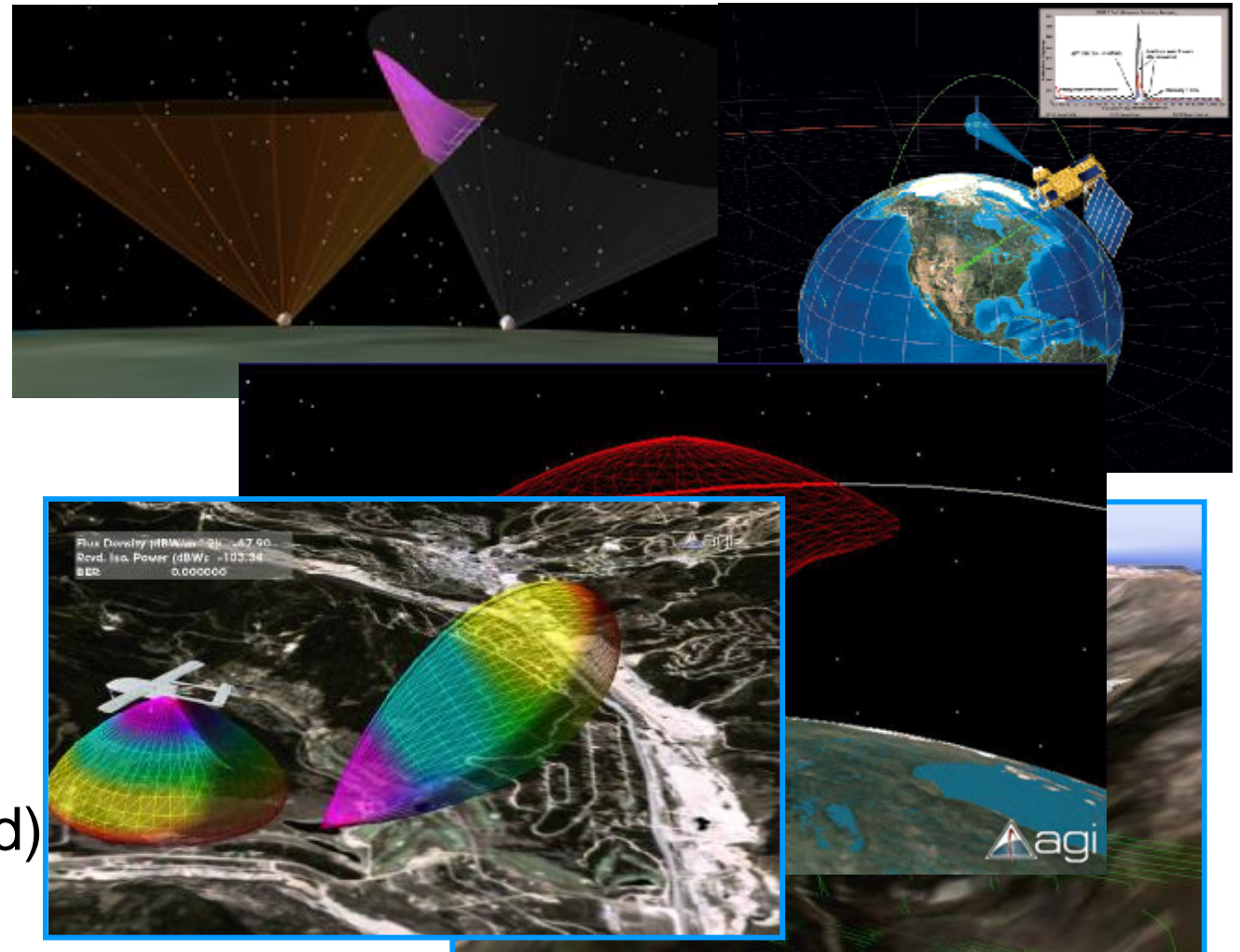
How would GIS define...?



More than geometry



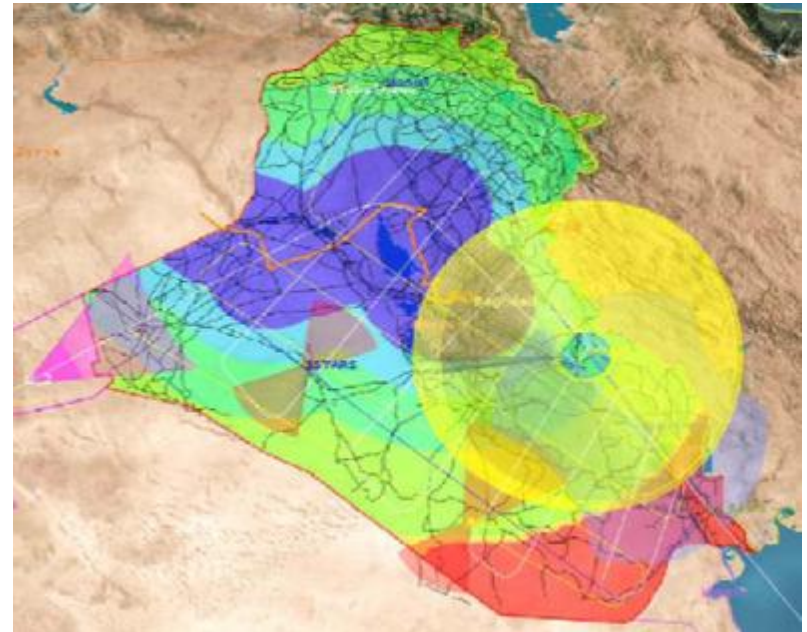
- Power
 - Antenna gain
 - Attitude
 - Rate of change
 - Velocity
 - Positional error
- + Geometry
(not just earth fixed)



Enhanced Temporal GIS



- Marriage of geometry and intelligence
 - Locational data + characteristics of an asset
 - New geospatial product

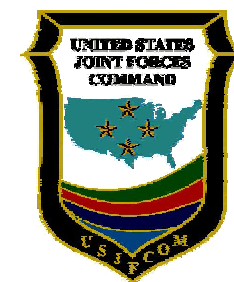
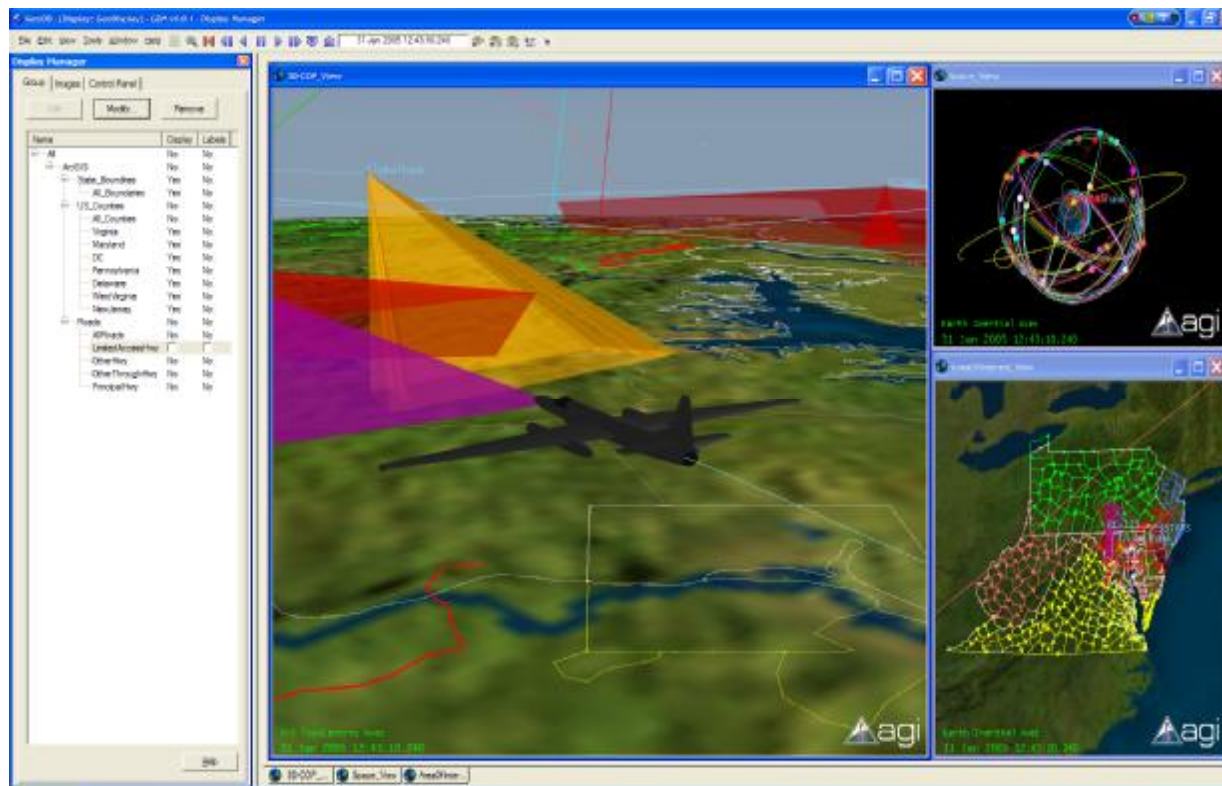


- AGI's software development kit (SDK) can be customized into any form
 - ESRI
 - Geodatabase
 - Extensions
 - Geoprocessing
 - Industry Standards
 - OGC
 - Microsoft Virtual Earth
 - Google Earth
- Examples are given in the next slides:

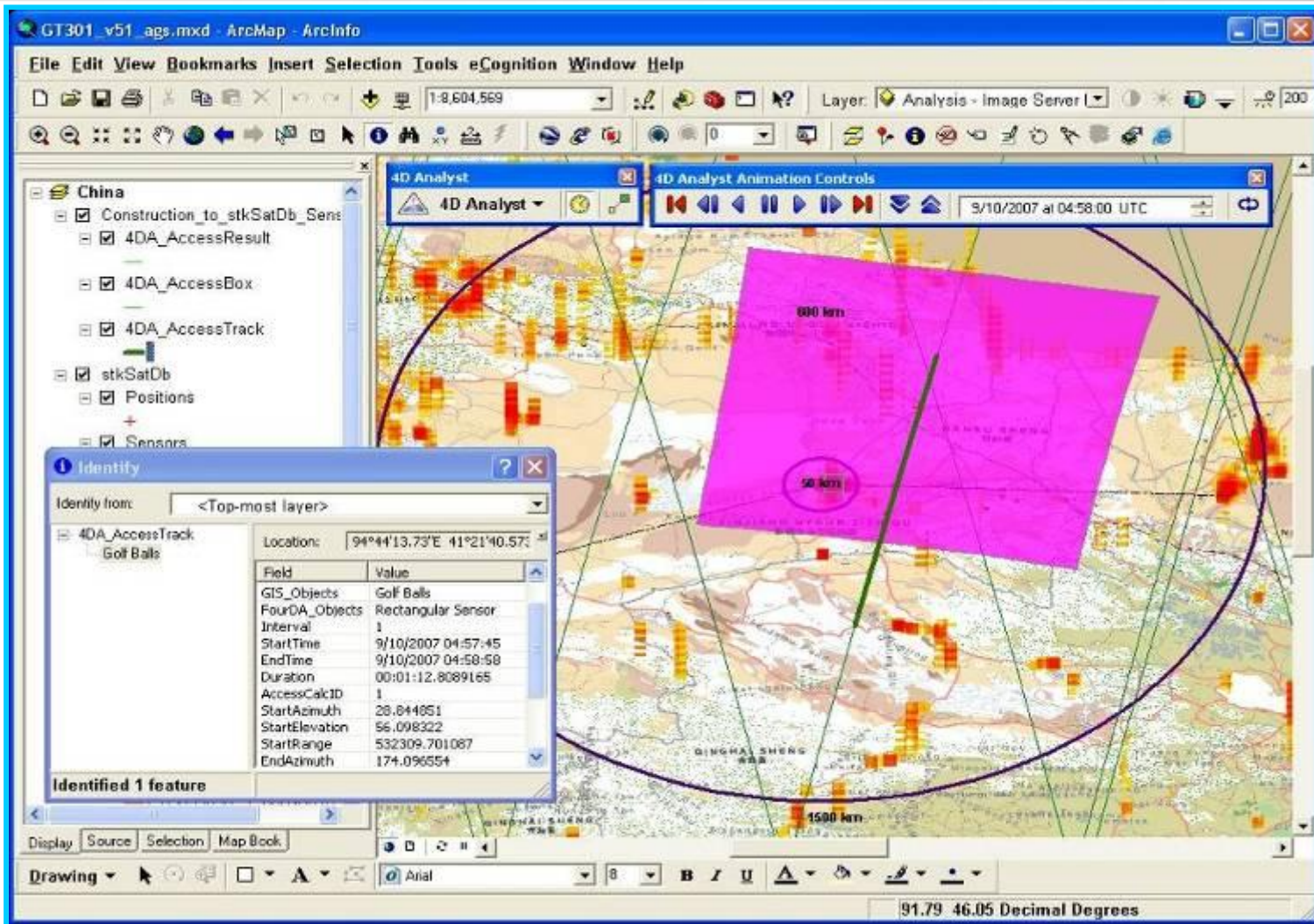
GDM demonstration



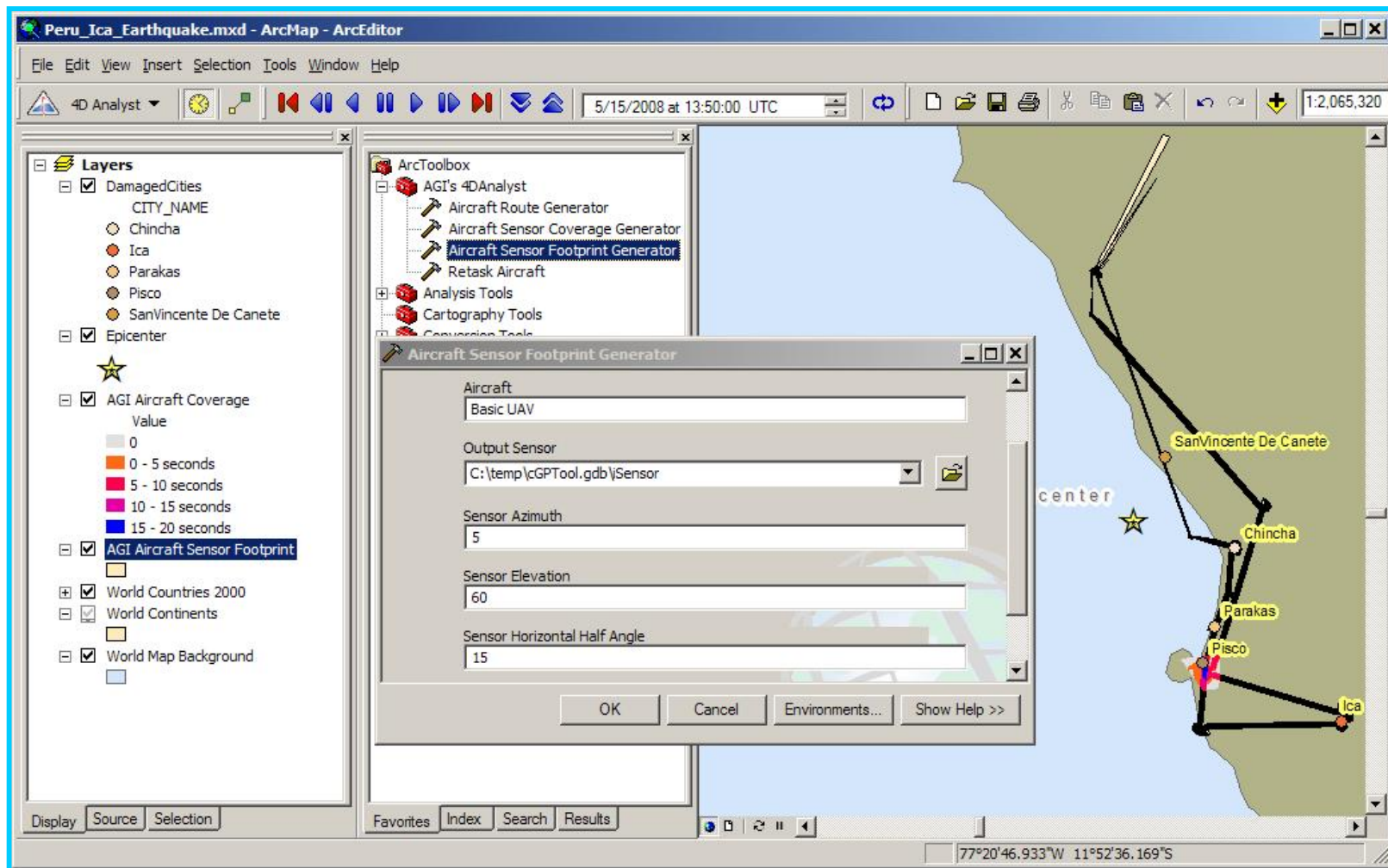
- 4D geodynamic situational awareness for the warfighter



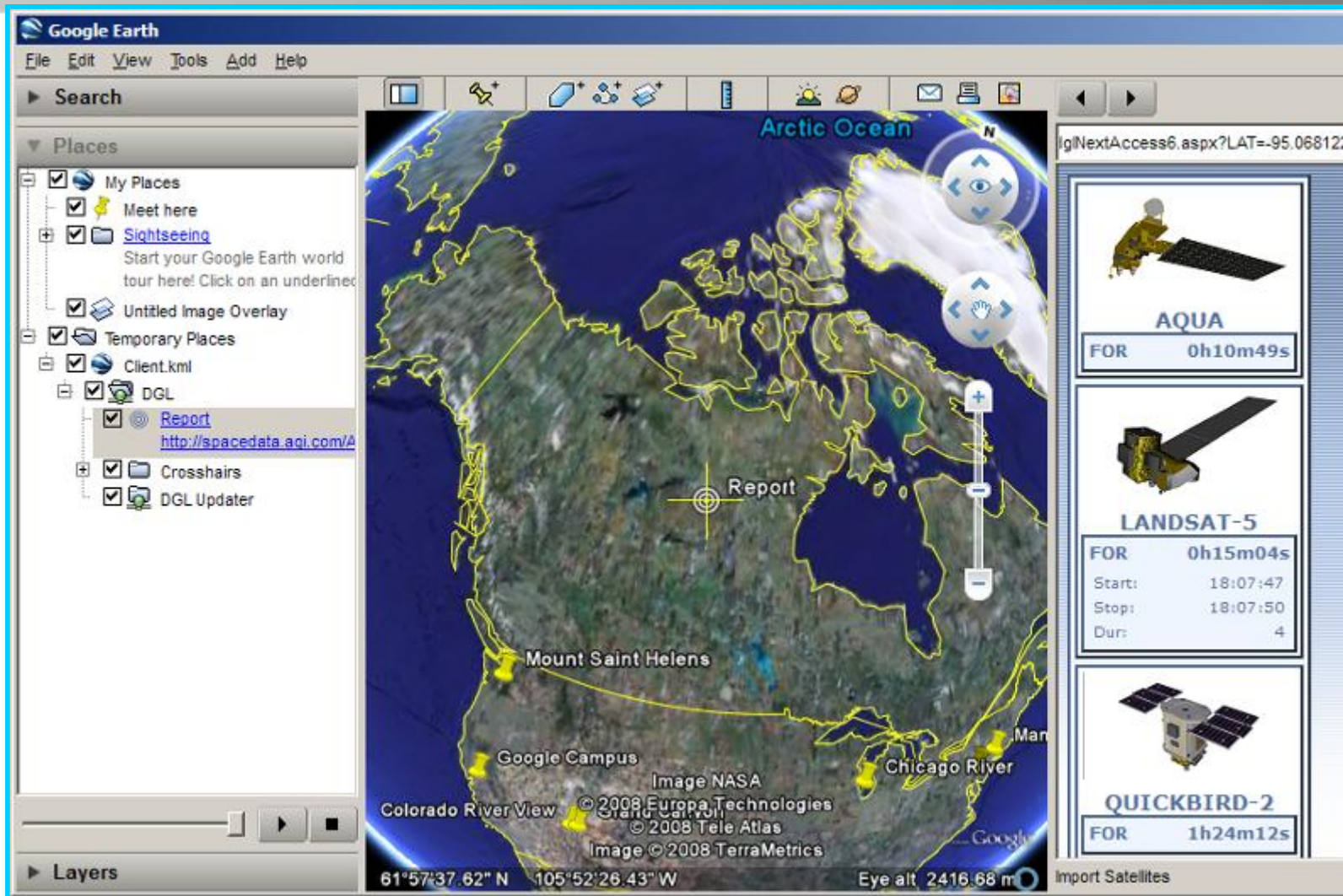
Satellite & Sensor Analyst



Example AGI geoprocessing tool in ArcGIS



Example AGI KML web service in Google Earth



Closing remarks



- INSCOM IDC adopted as JIOC architecture
 - Embeds STK technology for advanced visualization
 - Currently installed at JFCOM locally
 - Recently deployed to JIOC-I
- Single integrated picture of real-time assets & multi-int geospatial data
- 4D geodynamic situational awareness for the warfighter



~ QUESTIONS? ~

Ways to follow-up



- Stop by our booth (D428) for more information
- Contact us directly to set up a time to meet

Todd A. Smith – Business Development

tsmith@agi.com

+1 610-981-8236