



USERS' CONFERENCE

OCTOBER 11-14, 2005 • WASHINGTON, D.C.

AWarE/STK Integration

Marc Neely

Science Applications International Corporation (SAIC)

Space and Missile Defense Command

Battle Lab (SMDBL)

Pg 1 of 10

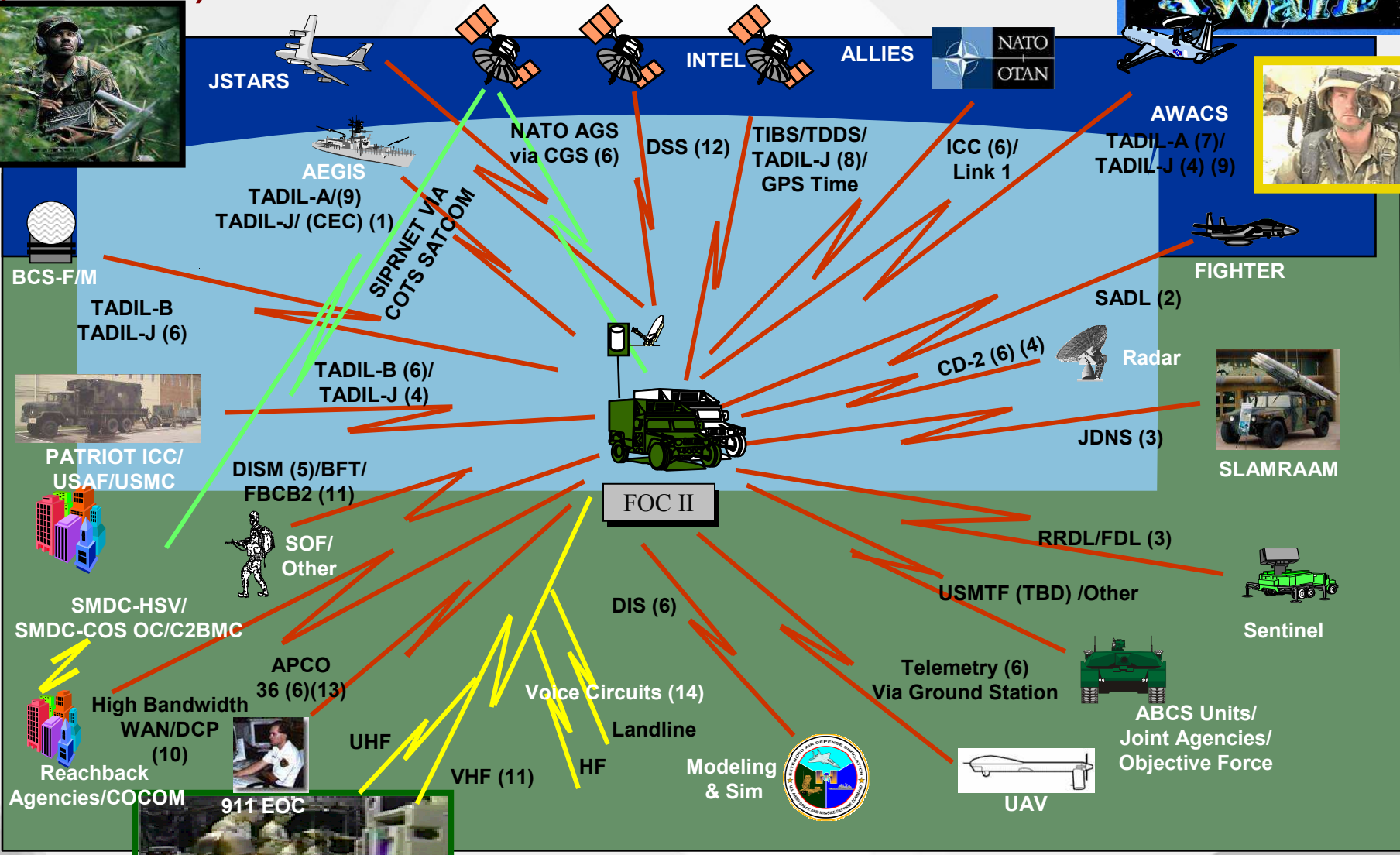
Agenda



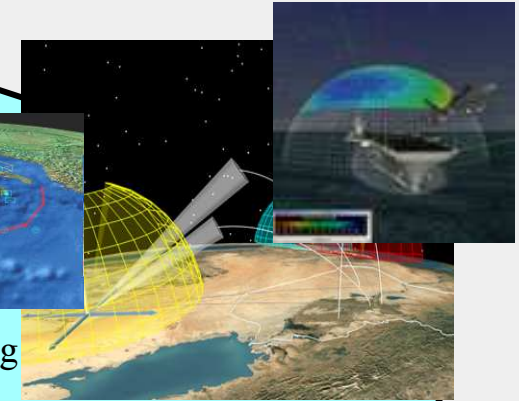
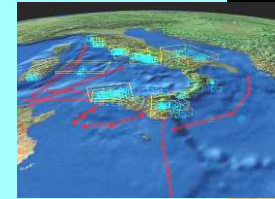
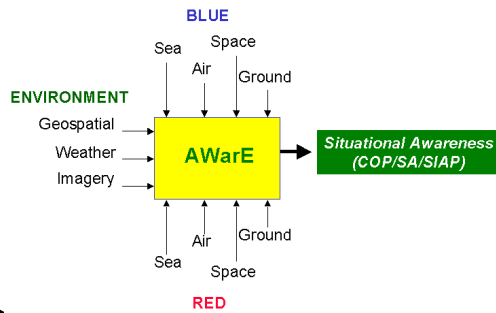
- AWarE Overview
- .NET Architecture for AWarE
- AWarE/STK Design Overview
- AWarE/STK Demos
 - Active X (STKX)
 - STK 6.0 Application
- Questions



Advanced Warfare Environment (AWarE)



Advanced Warfare Environment



Communications

- SATCOM
- UHF
- VHF
- SHF
- Network
- Etc.....

Tactical Feeds

- USMTF
- C2PC
- OTH Gold
- JSTARS (MTI)
- DIS
- JCDB
- Radar Feeds*
- TADIL-A*/B*/J
- FDL*
- CEC*
- FBCB2
- TIBS
- TDDS

* with correlator

Blue
Red

Windows-based

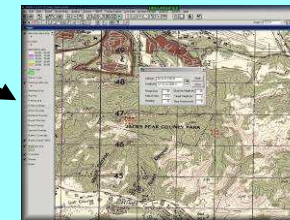
- MS Office
- MS Tools
- ArcView
- Satellite Tool Kit

IPB Preparation

Planning



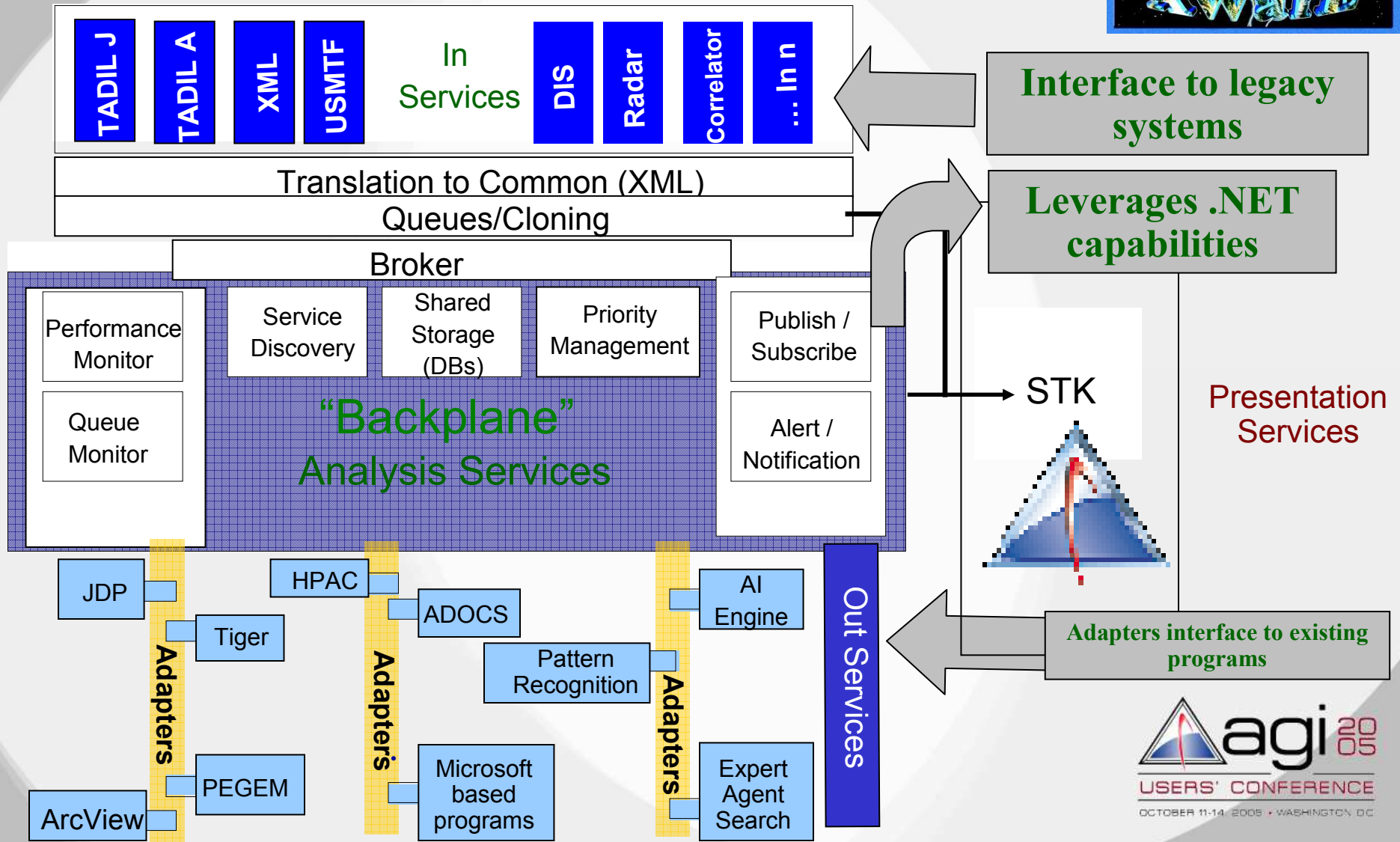
Operational Control



Shared Situational Awareness

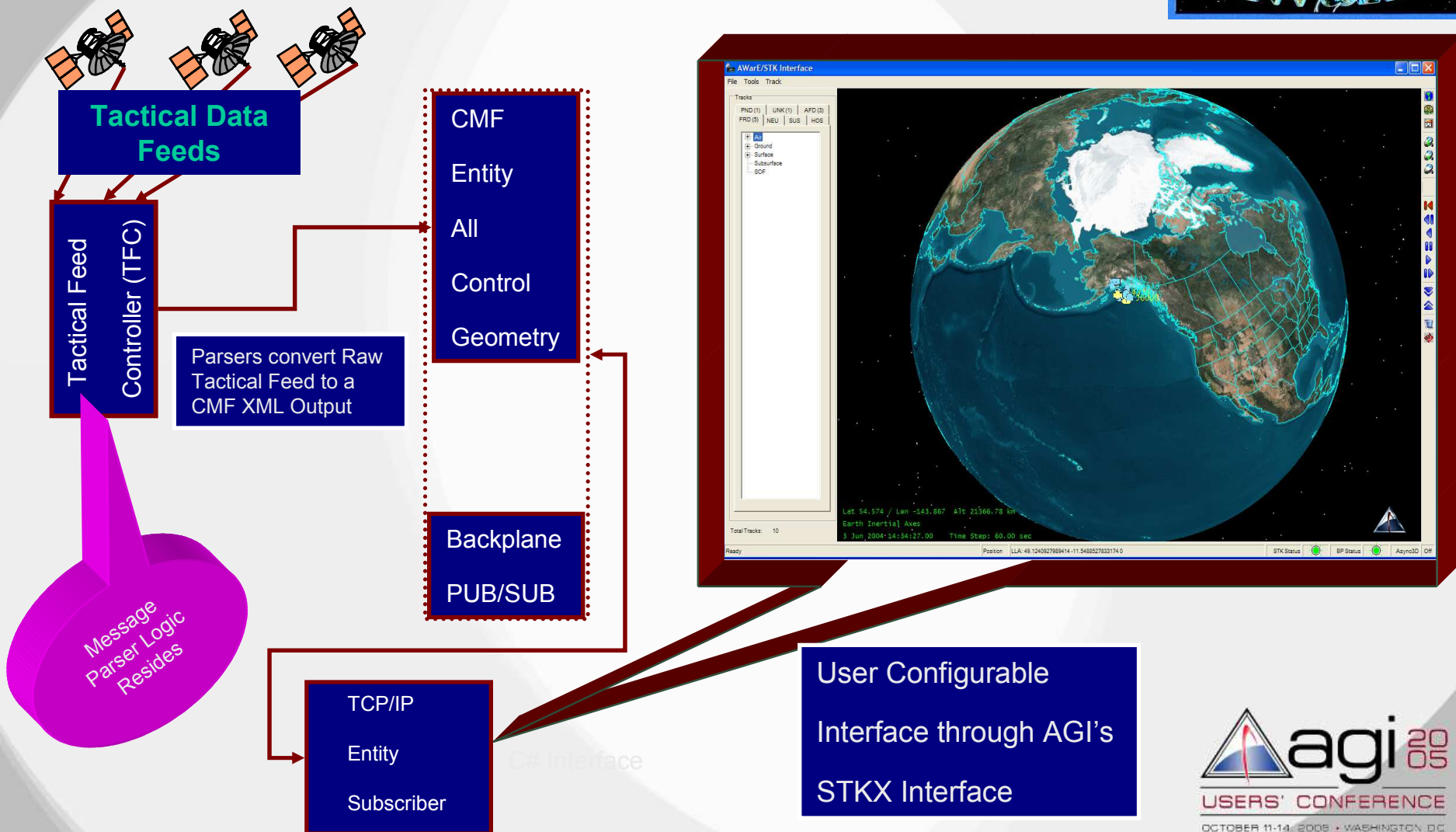


AWarE .Net Initial Design



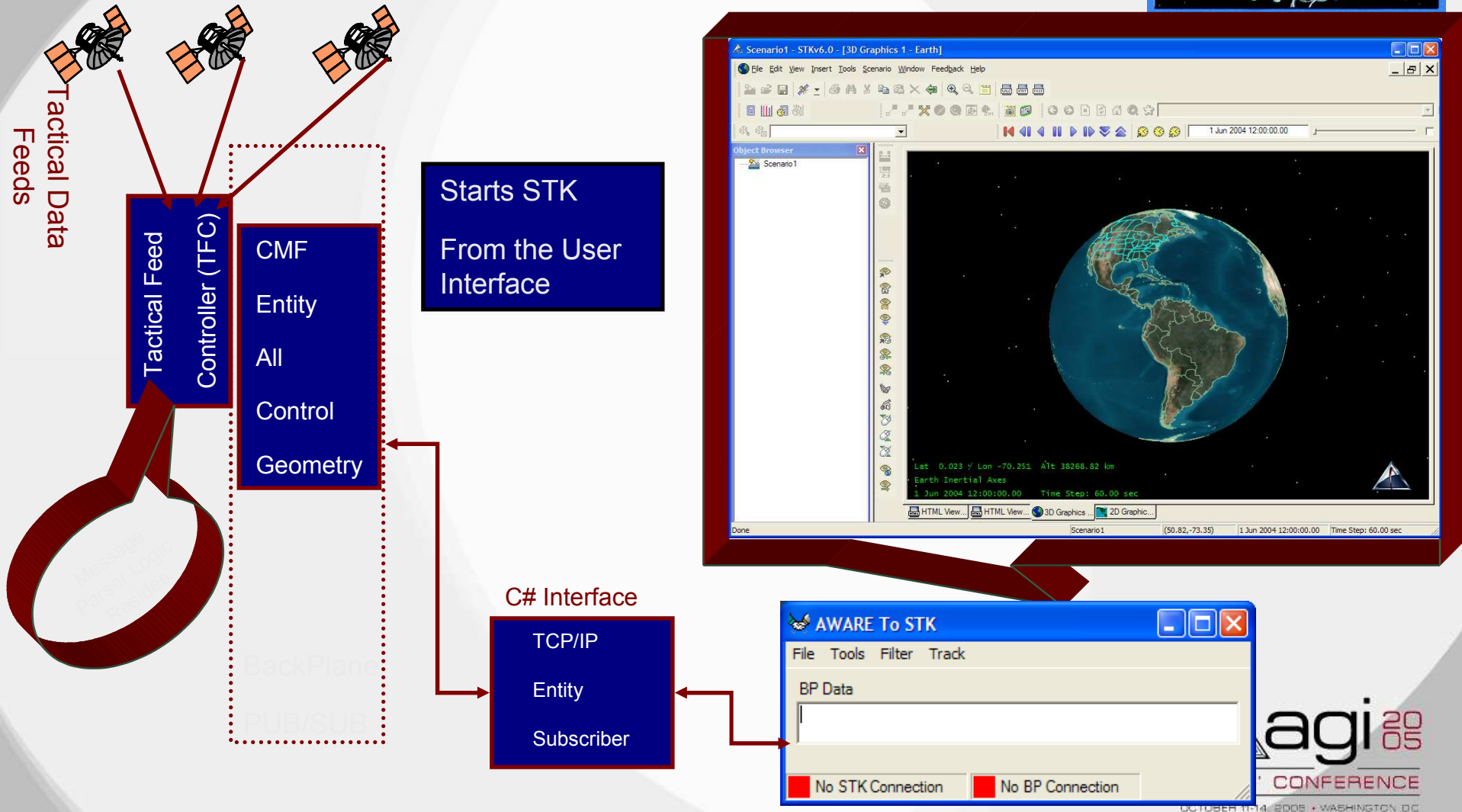
AWarE/STK Design Overview

Active X (STKX)



AWarE/STK Design Overview

Application (STK v6.0)



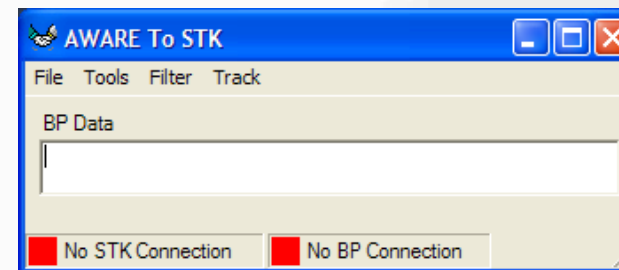
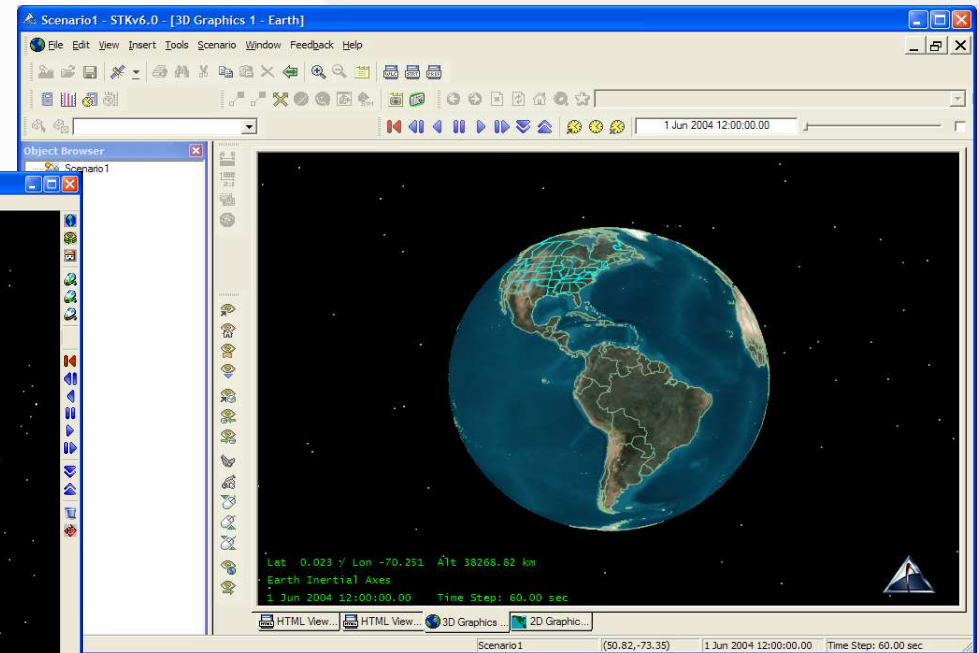
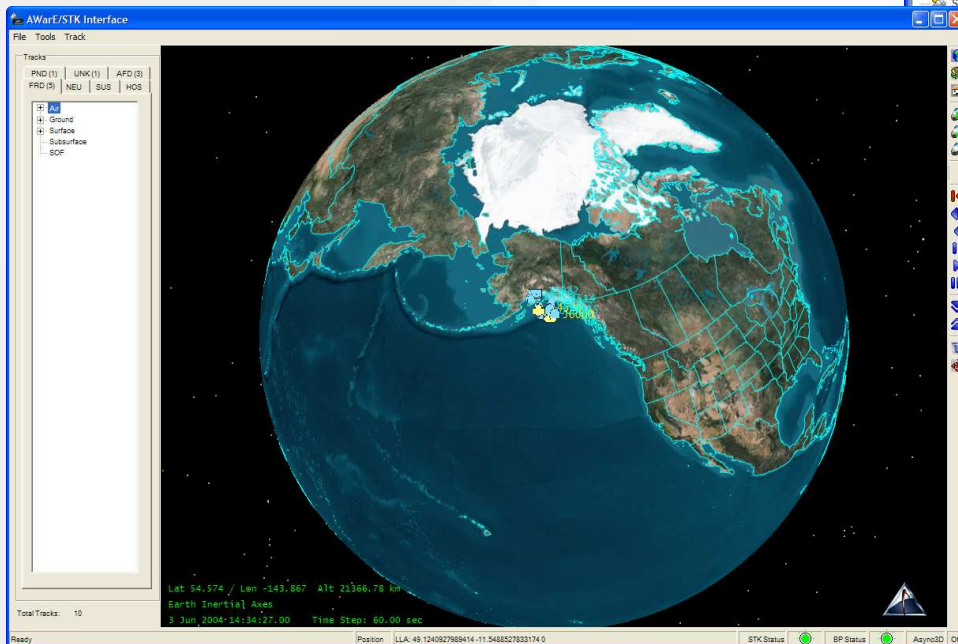
AWarE/STK Functionality



- Symbol Sets
 - MIL-STD-2525B symbols
 - Custom
 - AGI Models
- Time based Fading
- Track History
- Filtering
 - Filter with three Geolocation Areas of Interest (AOI's)
 - Filter by Specific Type based on 2525B hierarchy
 - Real or exercise track
- Replay and Archive Data

- Track Amplification Data
 - User Definable
 - Hook by List, Tree, Or Mouse Event
- TBM Related Events
 - Pairing lines between the launch point and the predicted impact point
 - Error ellipse.
- Correlated IBS Tracks via ISAT
- Limited STK Application Functions
 - Mouse Events
 - Globe Details
 - Object Orientation

DEMOS (STKX and STK v6.0)



Questions



AGI

