

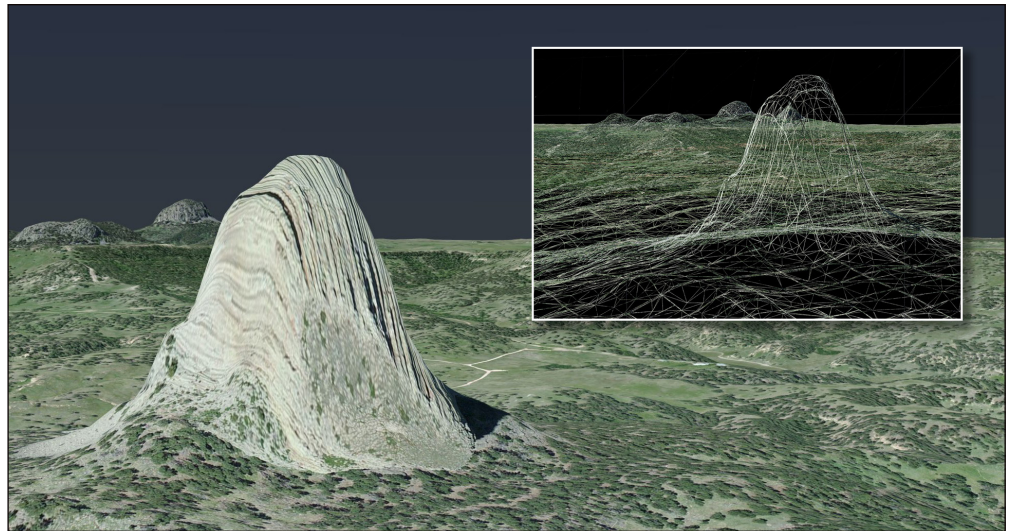


## STK Terrain, Imagery, and Maps (TIM) contains STK High Resolution mapping data for the entire globe.

TIM datasets enhance STK’s visual and analytical experience. In addition to providing “local” machine availability of high-resolution terrain, imagery, and maps (versus AGI’s hosted streaming terrain and Microsoft Bing’s imagery services), TIM also enables you to accomplish faster analysis of terrain-masking for line-of-sight and sensor intersections on terrain.

AGI currently provides the following datasets with TIM:

- SRTM - Shuttle Radar Topography Mission (ver 4.1)
- NED – National Elevation Dataset
- EarthSat NaturalVue
- RWDB II – Relational World Data Bank



Terrain/Imagery	Extent	Details
SRTM ver 4.1		Covers all land areas between 60° south and 60° north with a terrain resolution of approximately 90 meters. The dataset is divided into tiles that are 5° x 5°.
NED		Covers the CONUS, Alaska, Hawaii, Puerto Rico, and some Pacific territories, with a terrain resolution of approximately 30 meters. The dataset is divided into tiles that are 1° x 1°.
EarthSat NaturalVue		Covers the Korean peninsula. The imagery dataset based on Landsat data with a resolution of 15 meters. The dataset is divided into 5 tiles that are 5° (lat) x 6° (lon).

